

KINGO HOUSES

JØRN UTZON | HELSINGØR, DENMARK | 1958



C SPECKERT | J GIOVINAZZO | A TANG | G KALVAITIS | J SUBENDRAN



STATS

_HOUSING COMPLEX OF 60 COURTYARD HOUSES

_EACH HOUSE IS A SQUARE MODULE

_DWELLING AREA CONSTITUTES THE TWO SIDES OF THE ANGLE WHILE A SCREEN WALL FORMS THE TWO OPPOSING SIDES

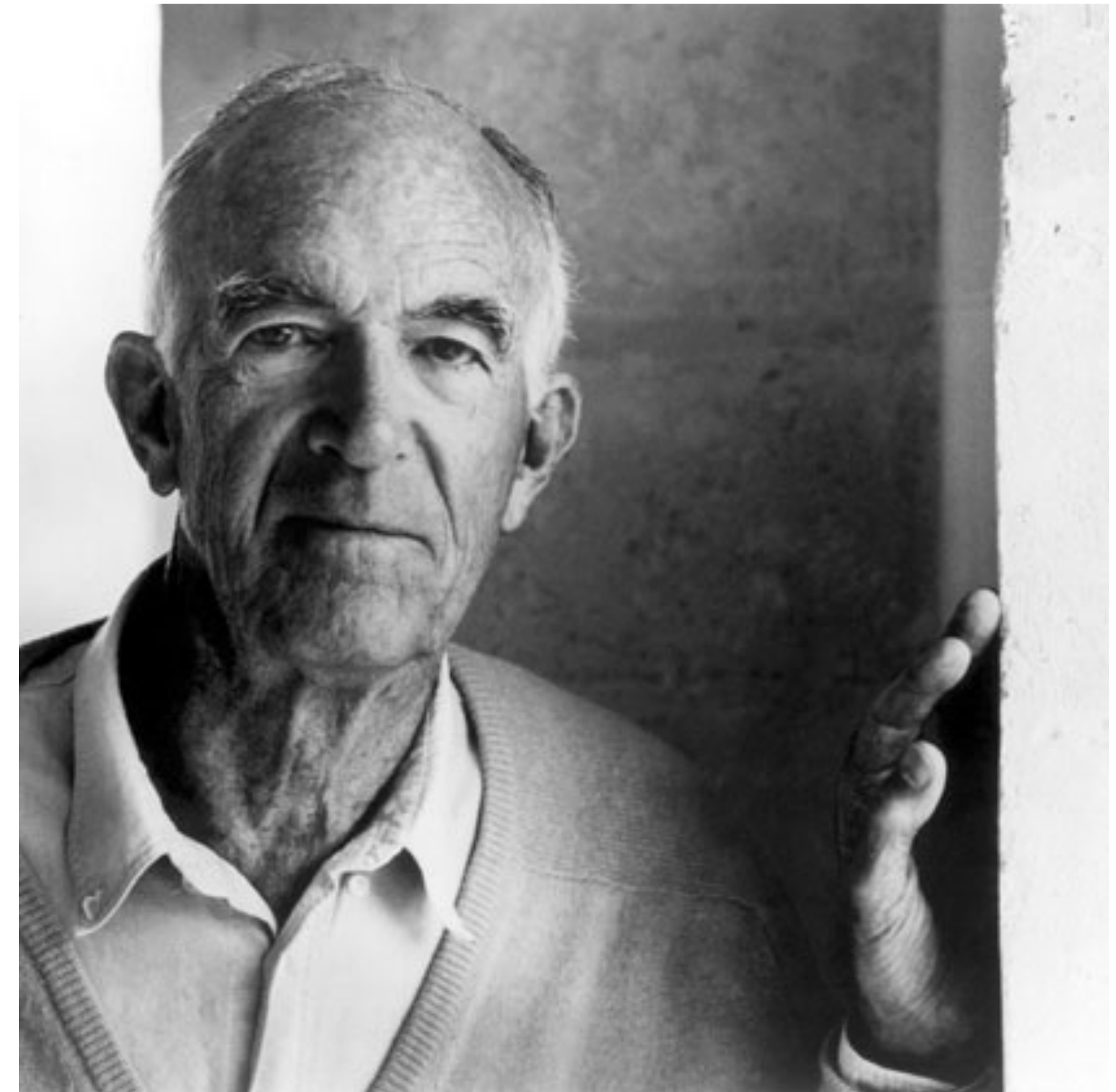
_SITE PLAN HAS COUNTRY LIKE AS WELL AS URBAN CHARACTERISTICS

JØRN UTZON

_DANISH ARCHITECT

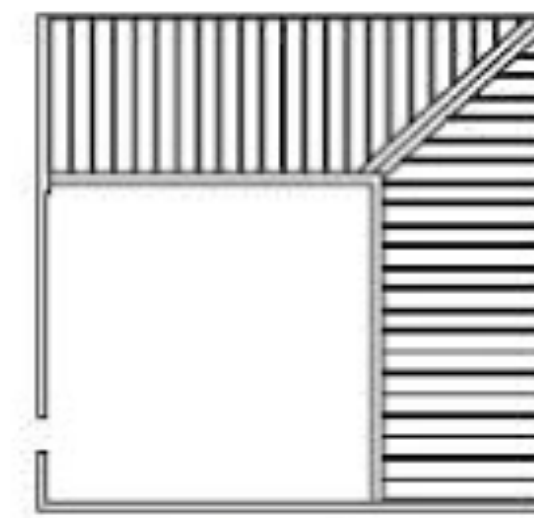
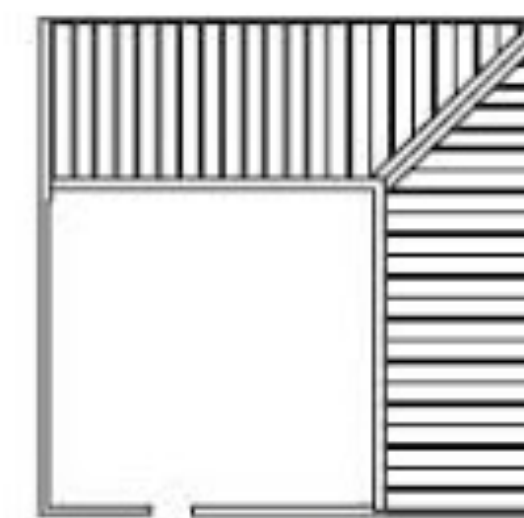
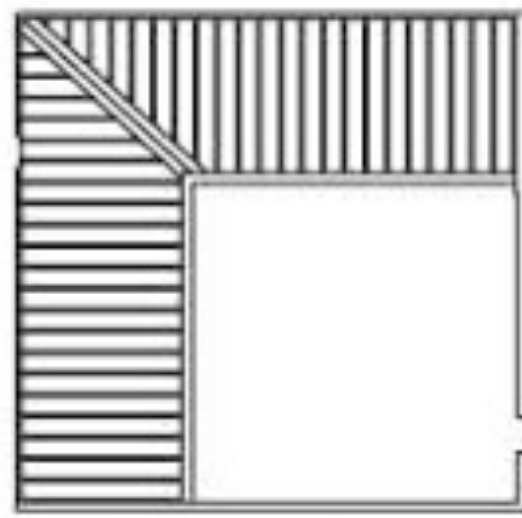
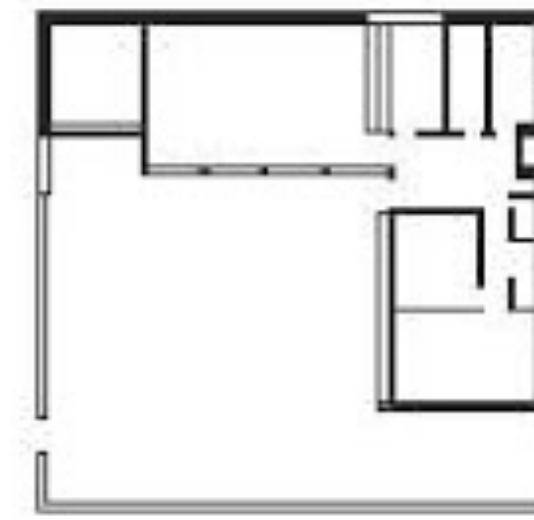
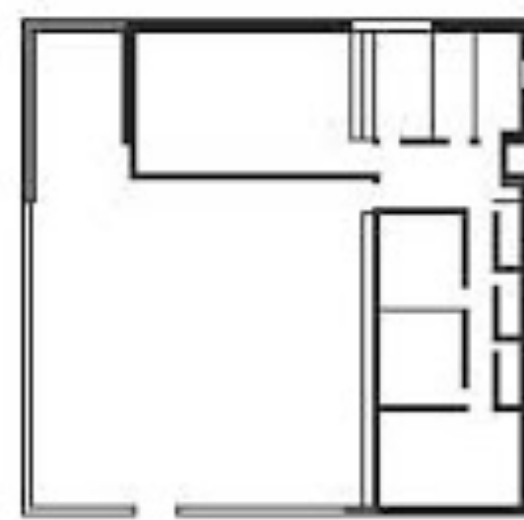
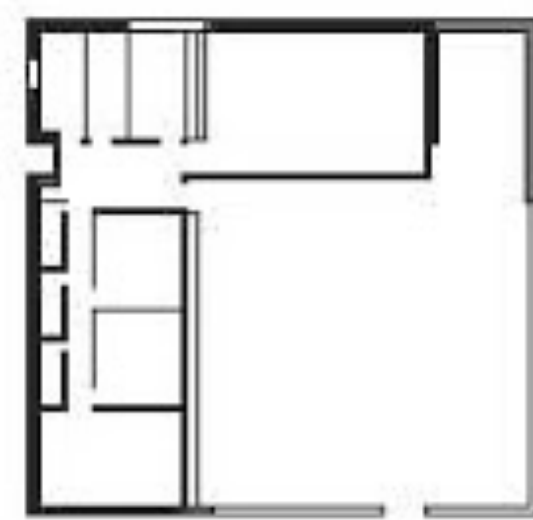
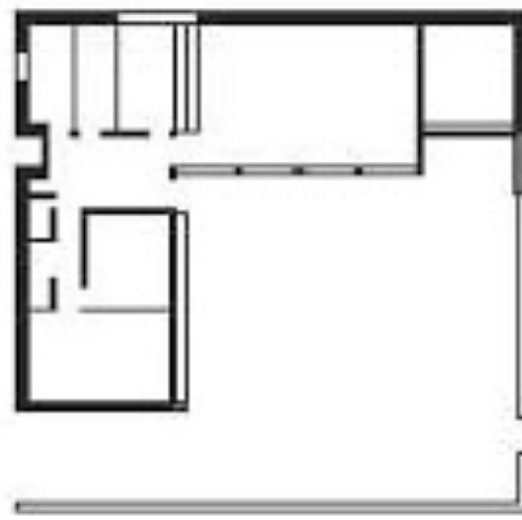
_NOTABLE FOR DESIGNING SYDNEY OPERA HOUSE

_EMPHASIZED THE SYNTHESIS OF FORM, MATERIAL
AND FUNCTION FOR SOCIAL VALUES



"EACH HOME HAS ITS OWN VIEW OVERLOOKING THE LANDSCAPE, WHICH GIVES THE TENANT AN EXPERIENCE OF BEING CLOSE TO NATURE, AND AT THE SAME TIME BEING A PART OF A LARGER BUILT-UP AREA. THE DEVELOPMENT PLAN IS CAREFULLY PLACED IN THE NATURE WITH RESPECT FOR THE VEGETATION IN THE AREA."

PLANS



TYPE A

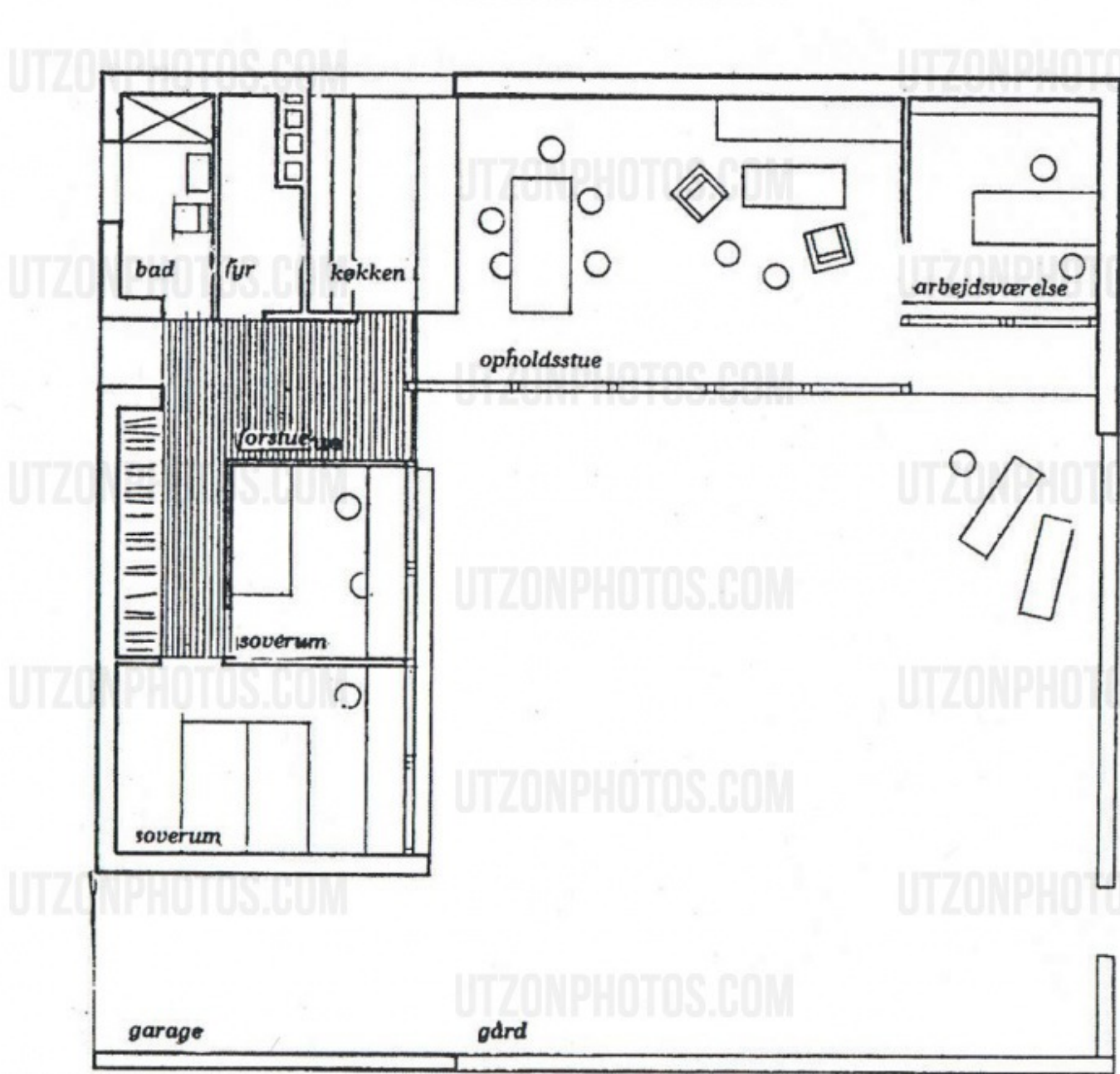
TYPE B

TYPE C

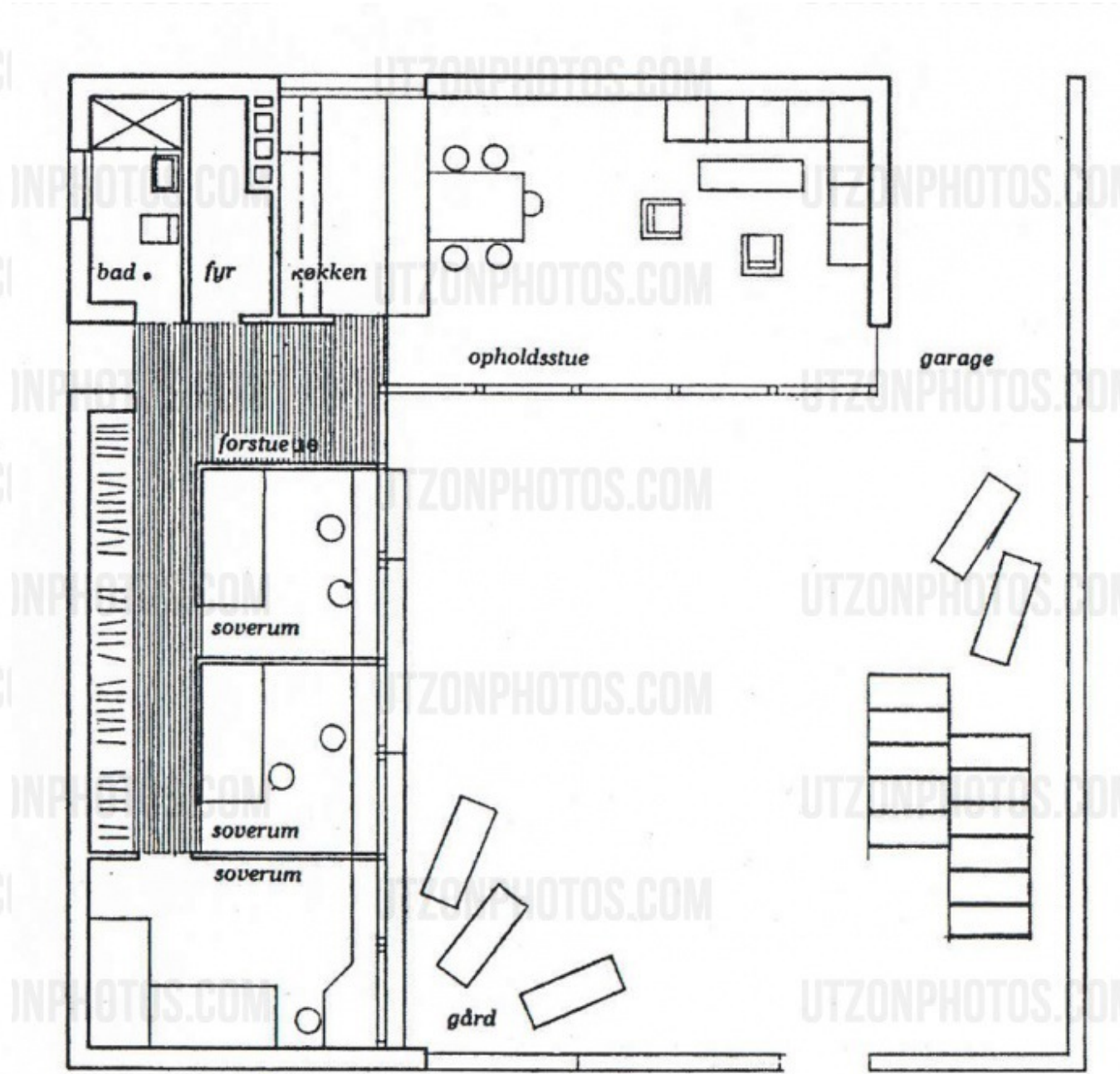
TYPE D

FLOOR PLAN

- _SQUARE MODULE
- _INTERIOR COURTYARD
- _15m x 15m

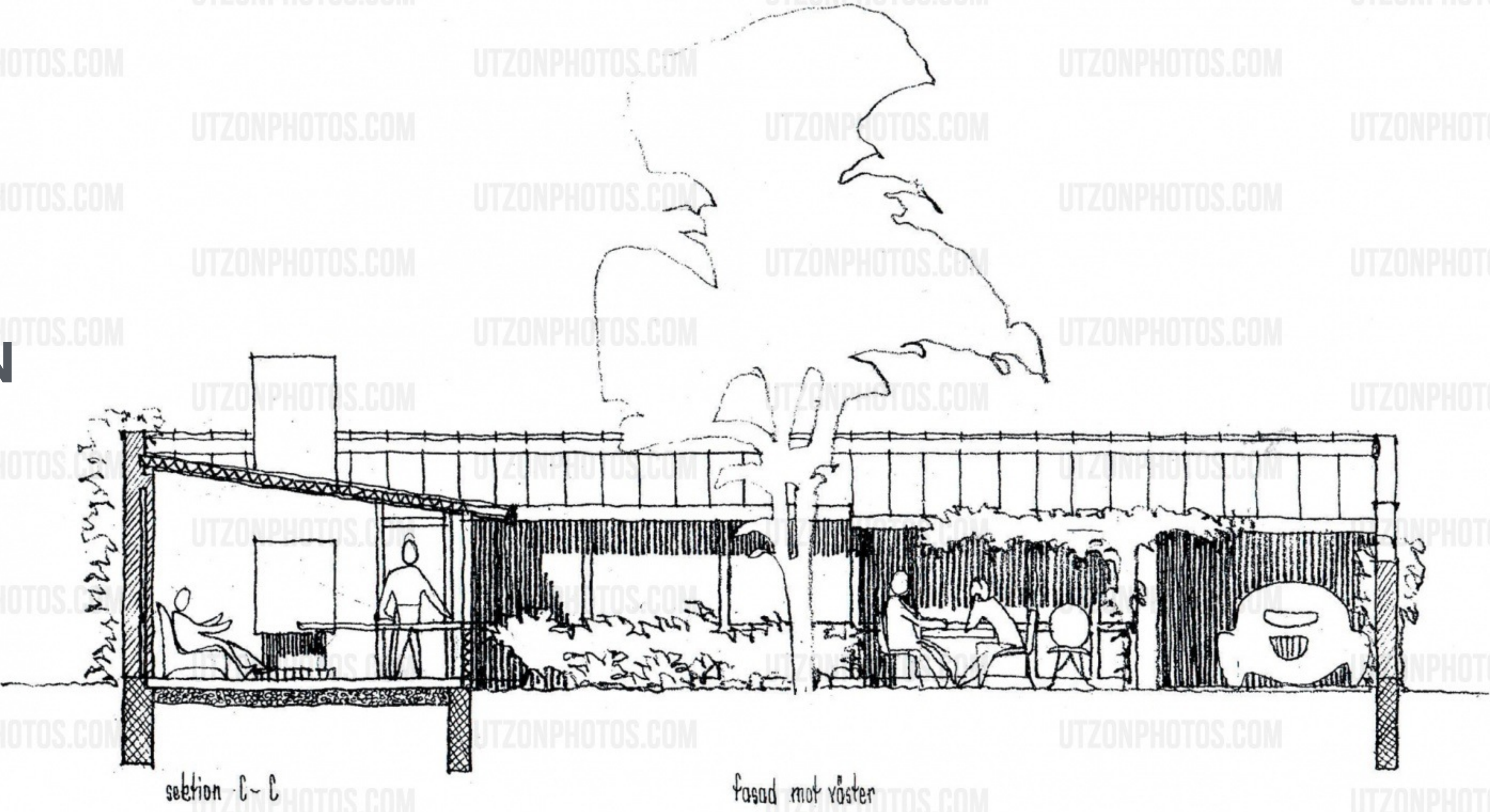


TYPE A FLOOR PLAN

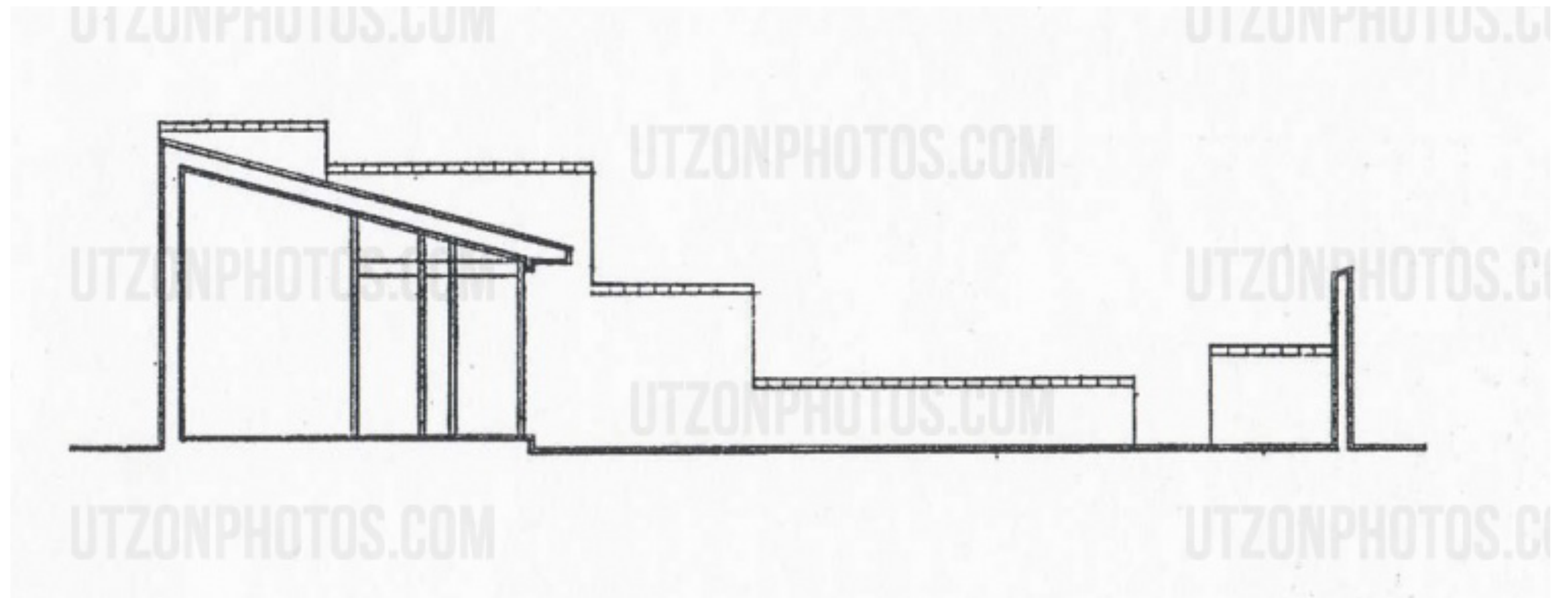
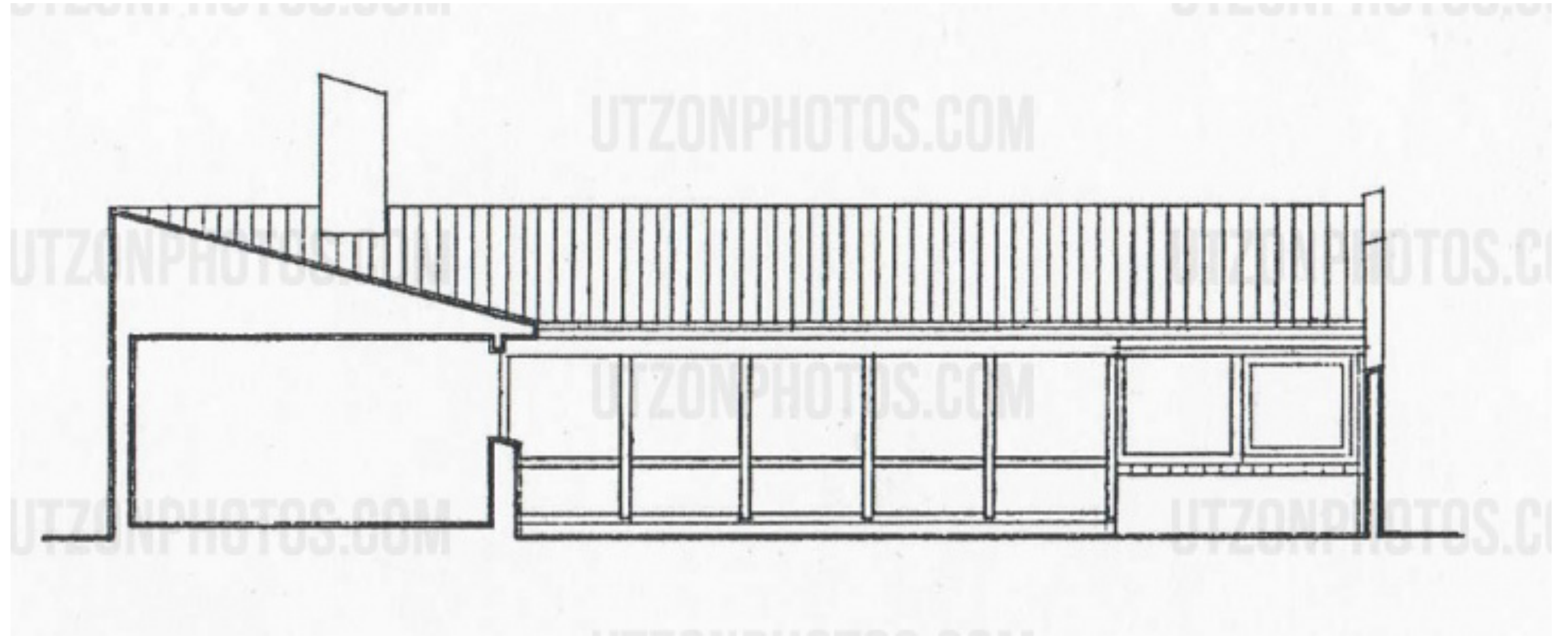


TYPE B FLOOR PLAN

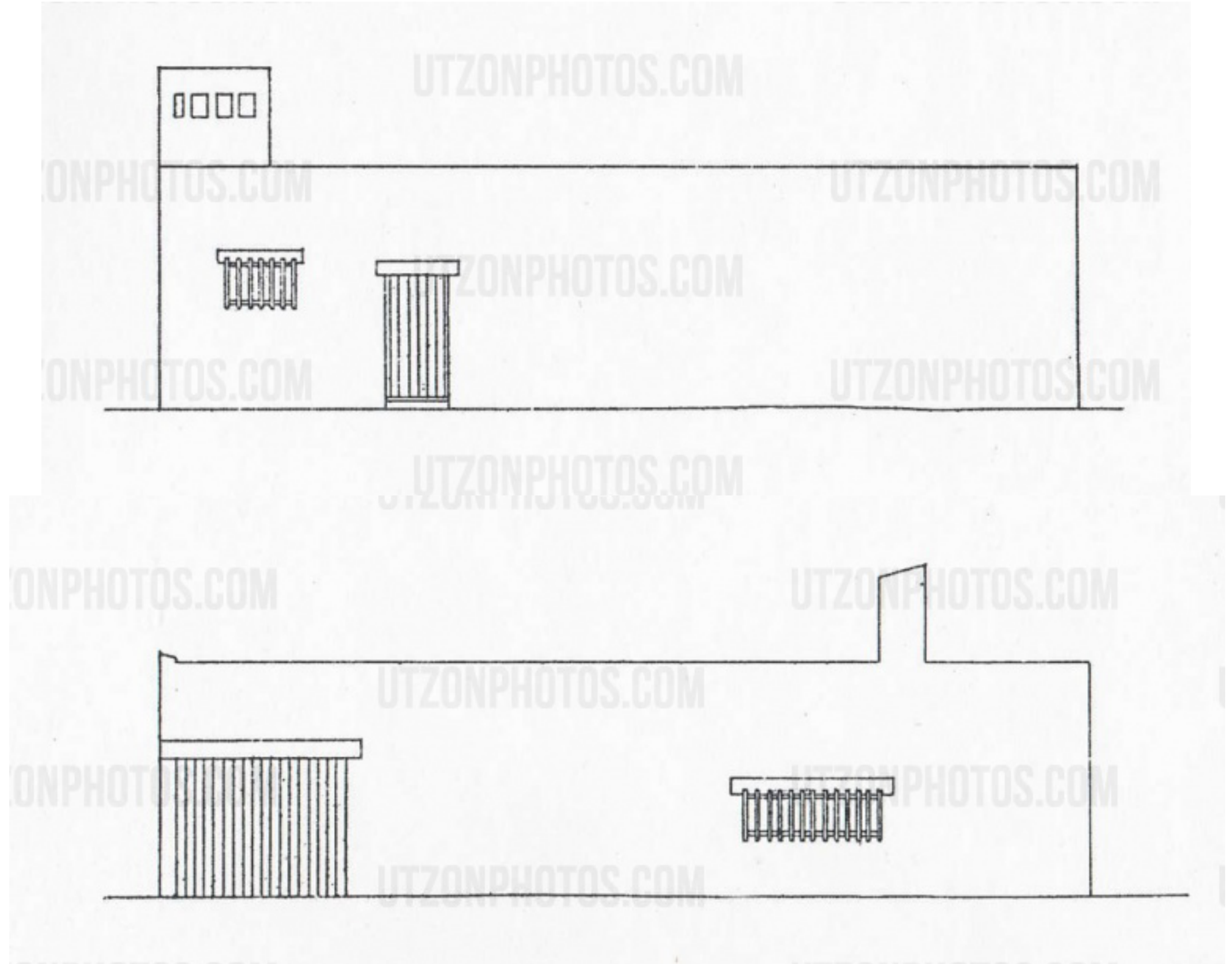
SECTION



SECTION



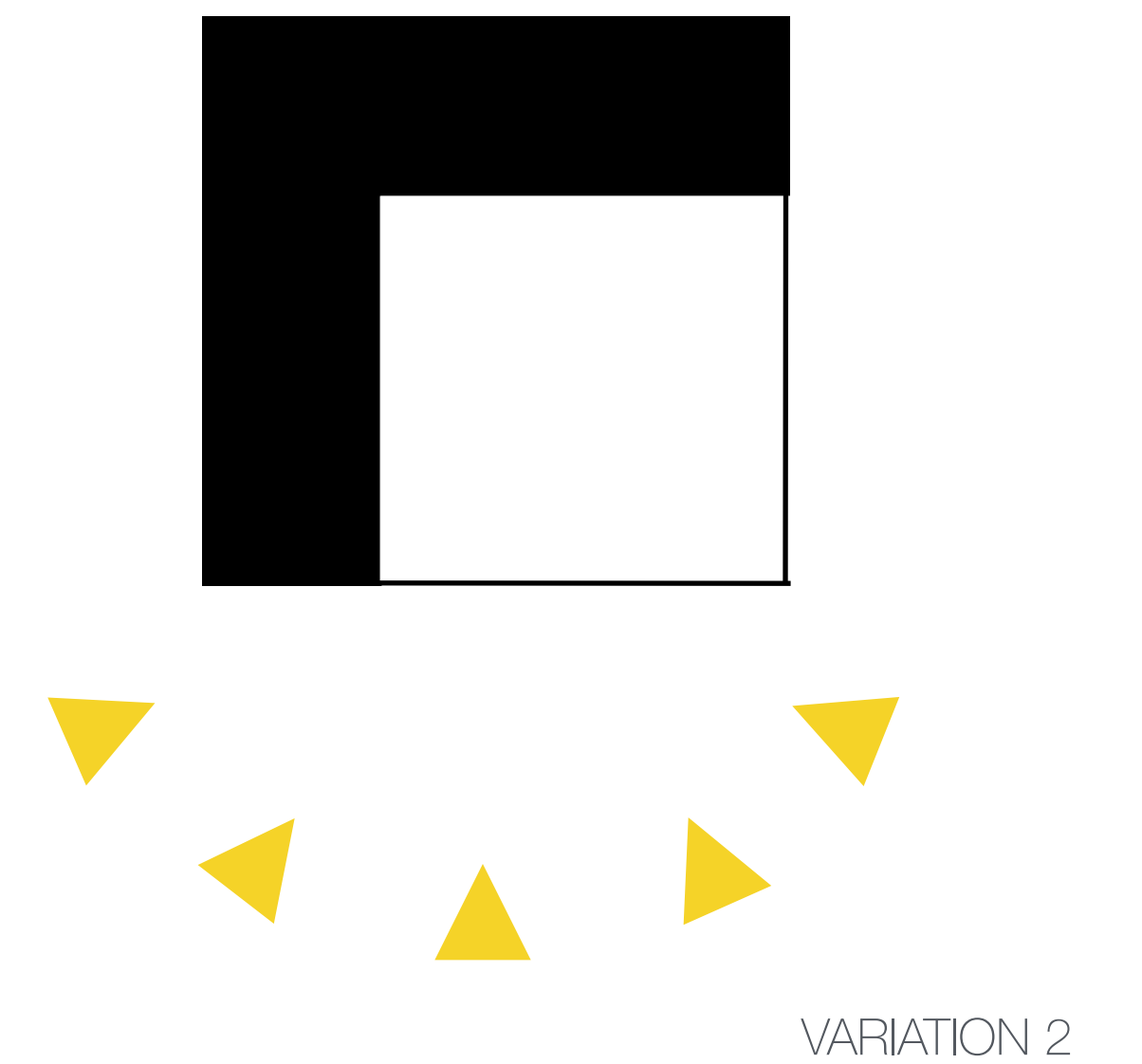
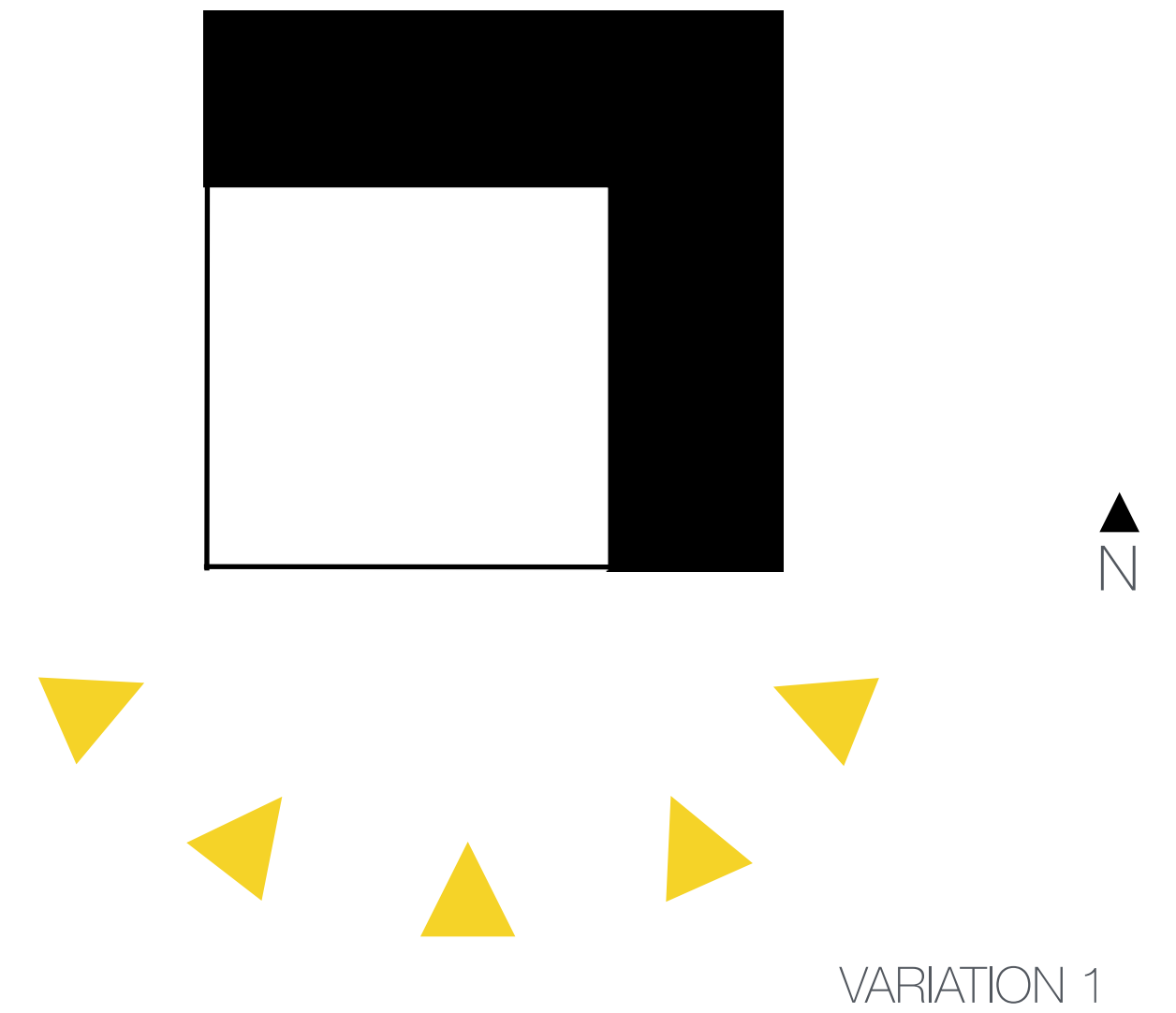
ELEVATION



LIGHTING

_MAXIMIZING SOUTH FACING LIGHT

_HOUSES ARRANGED TO HAVE SOUTH FACING EXPOSURE

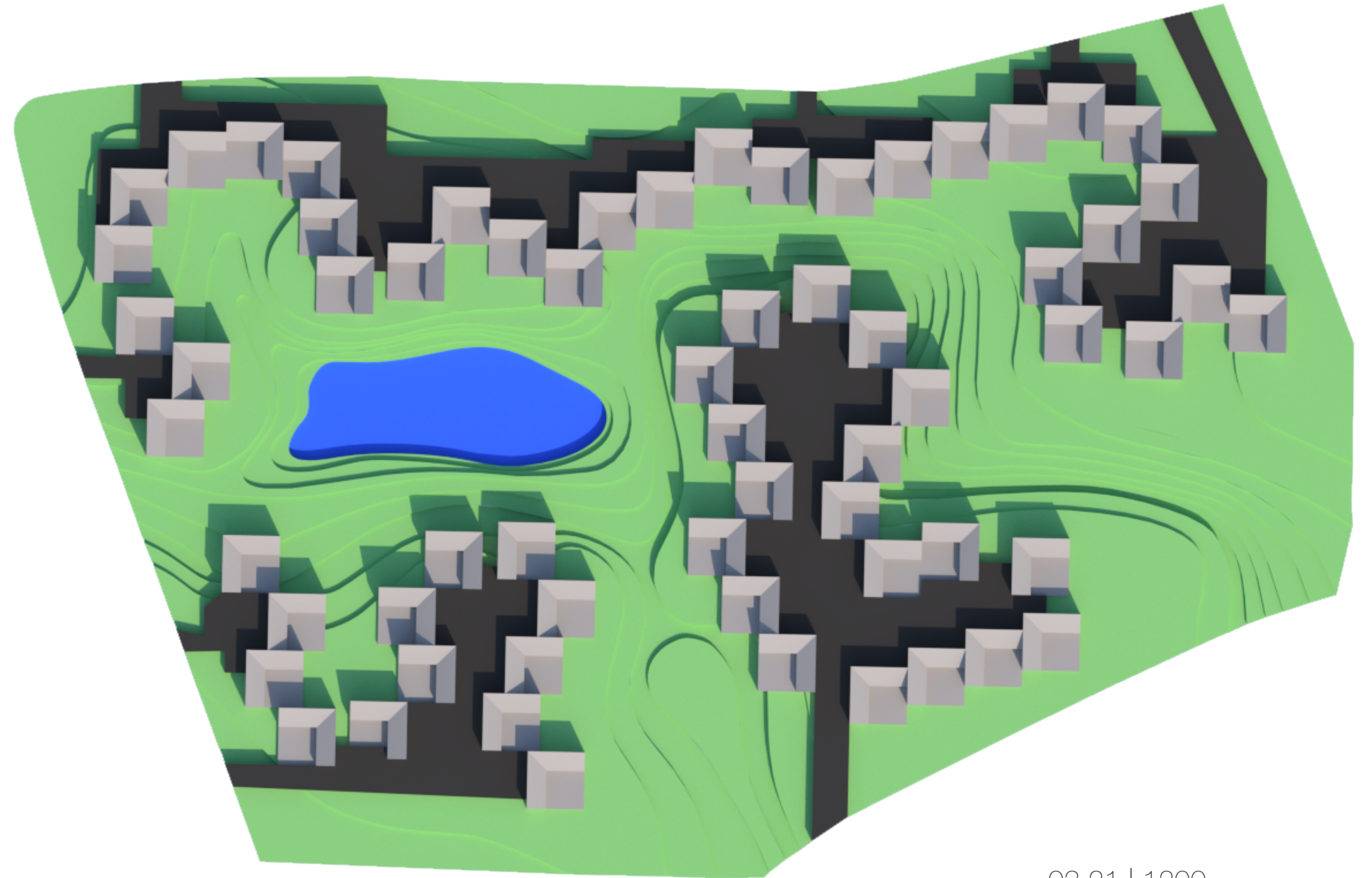


LIGHTING



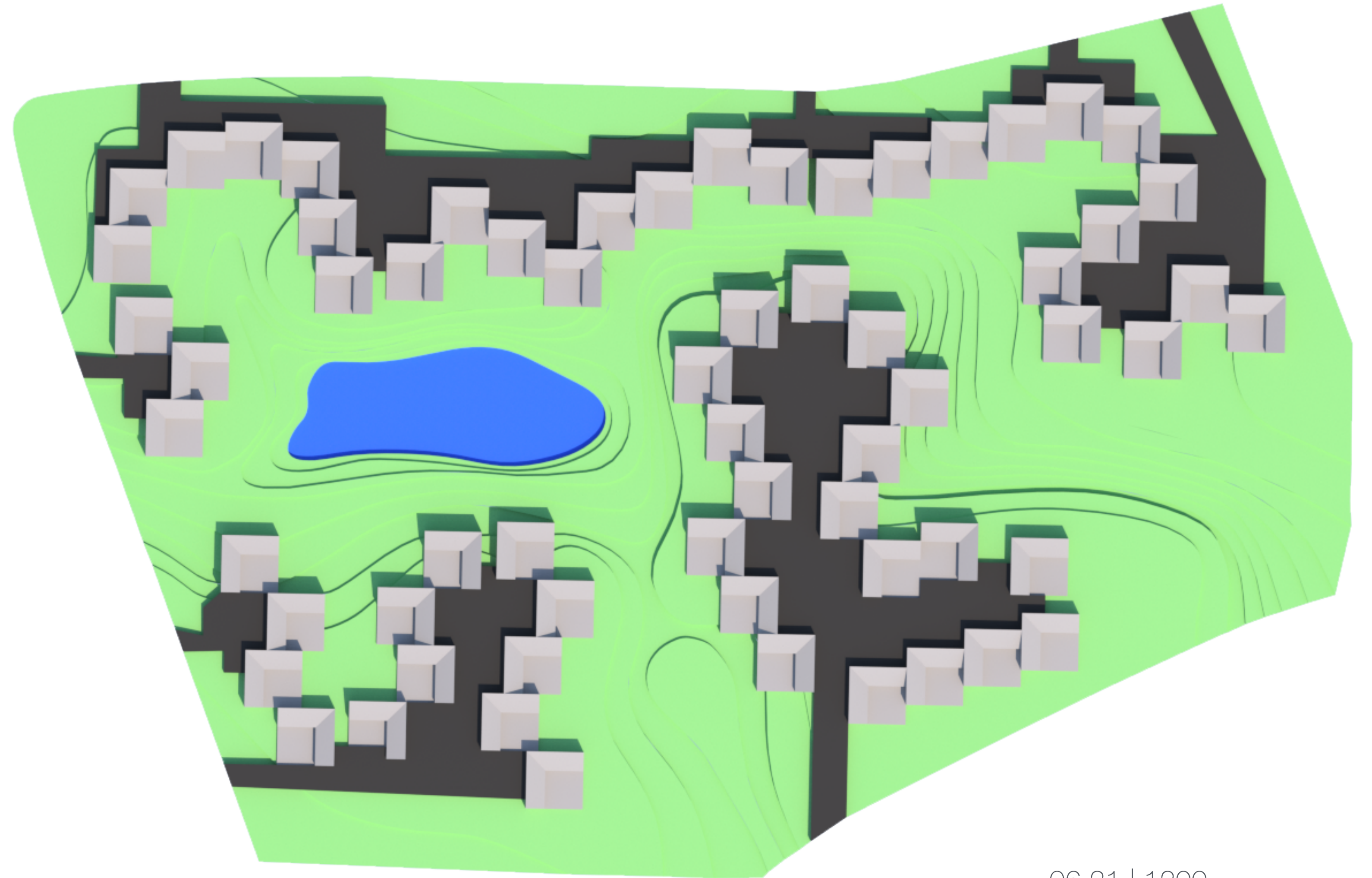
LIGHTING

_PASSIVE HEATING +
_DAY LIGHTING +



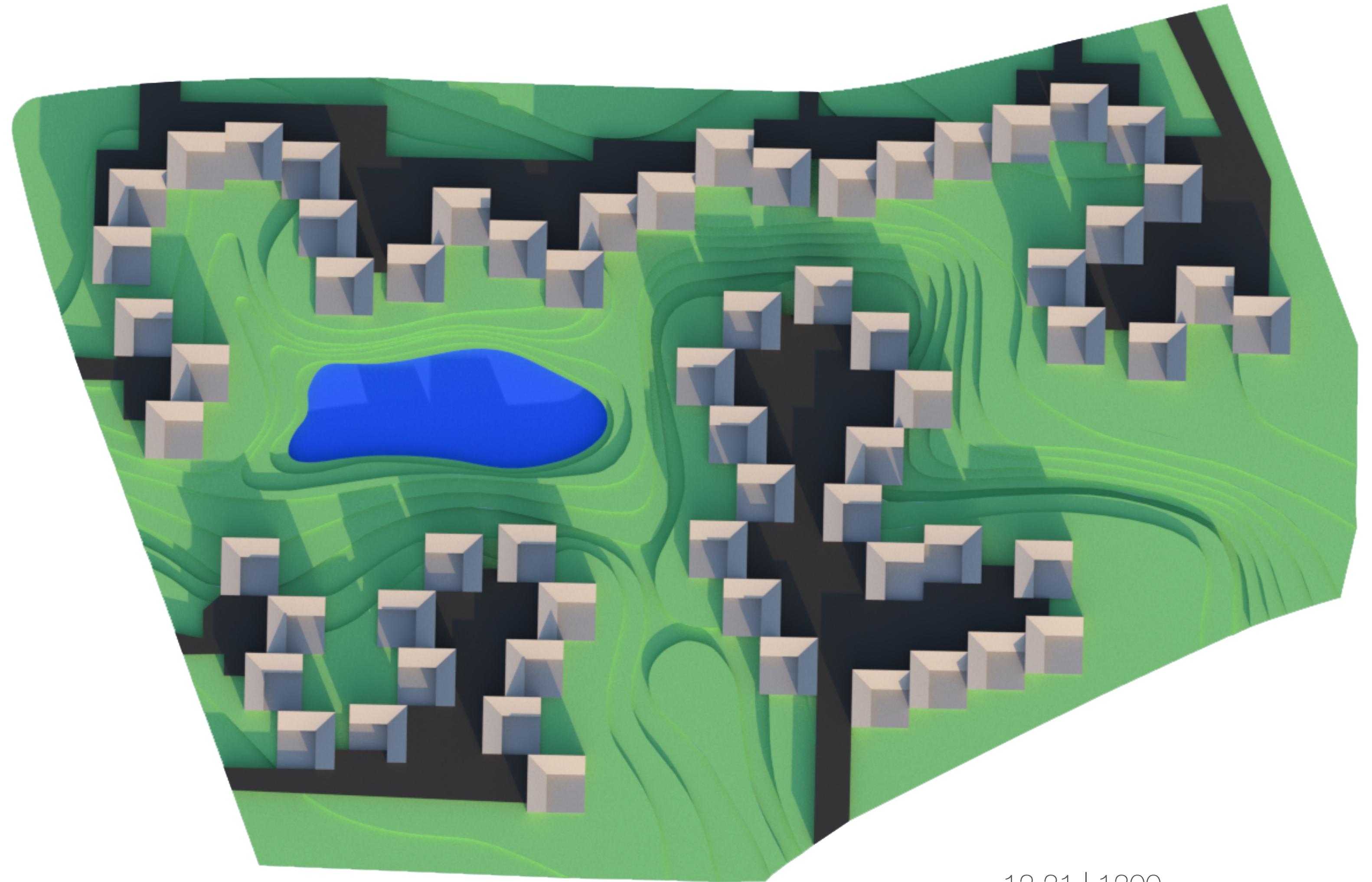
LIGHTING

_PASSIVE HEATING +
_DAY LIGHTING +

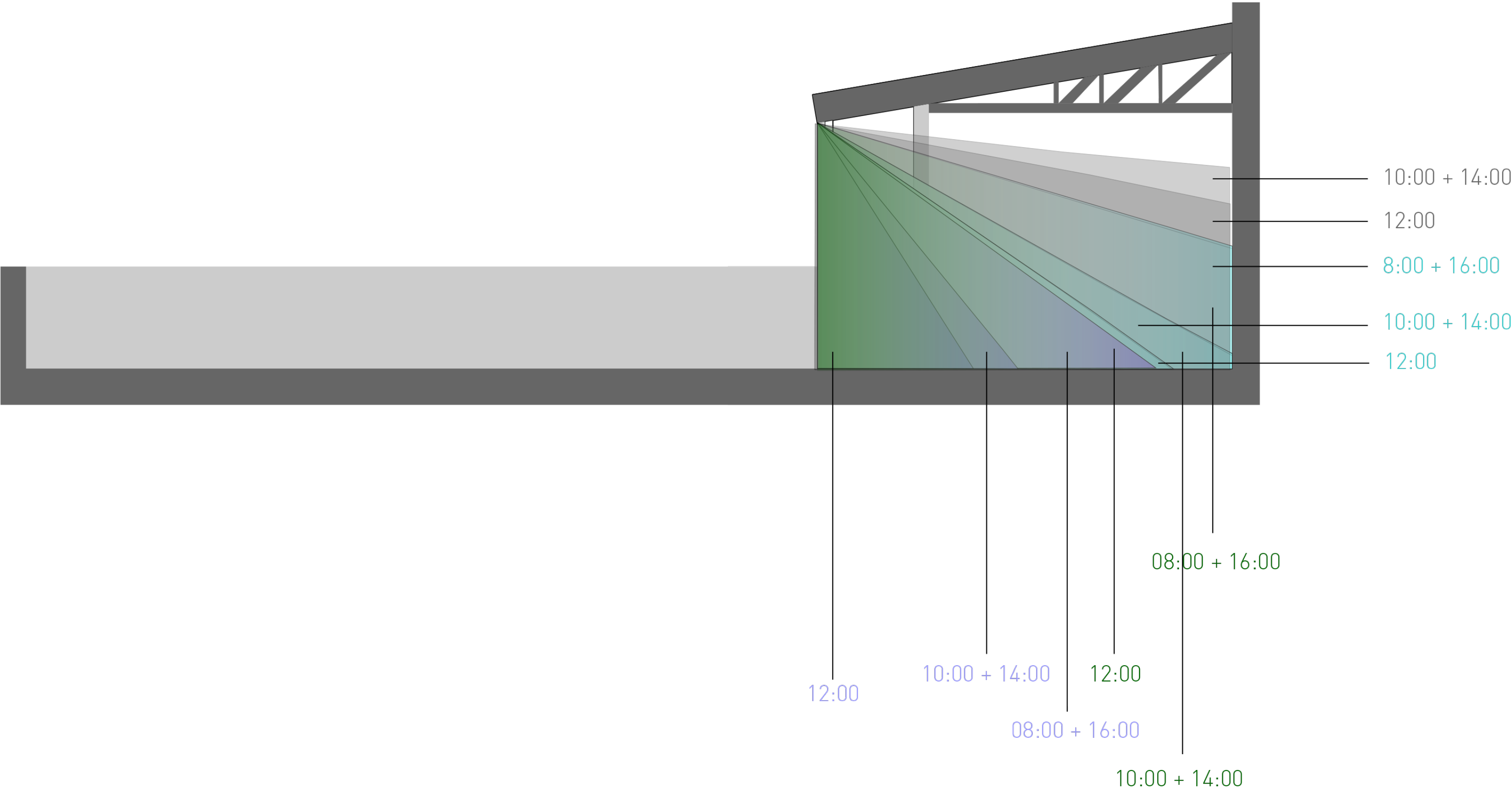


LIGHTING

_PASSIVE HEATING +
_DAY LIGHTING +

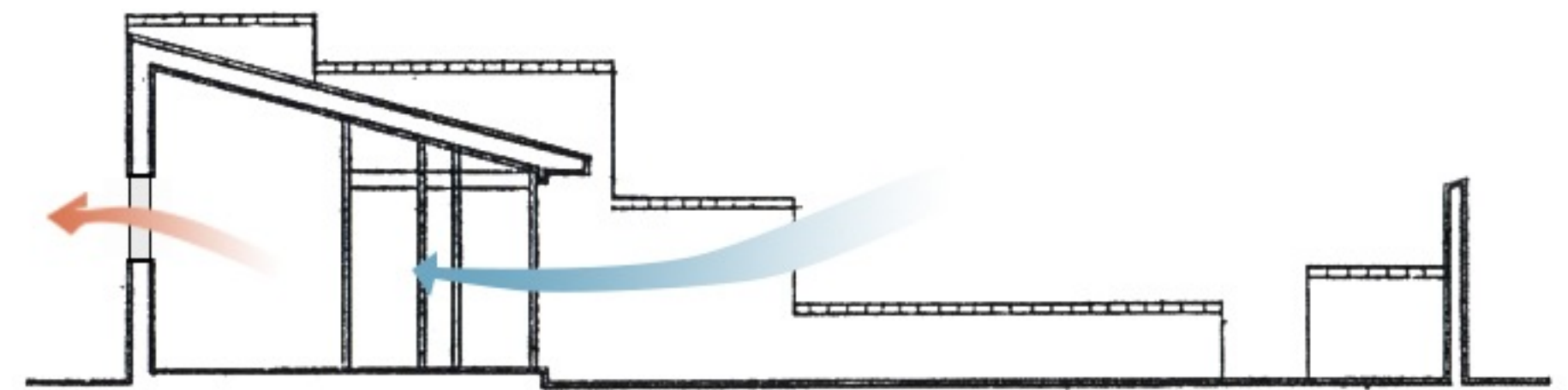


LIGHTING



NATURAL VENTILATION

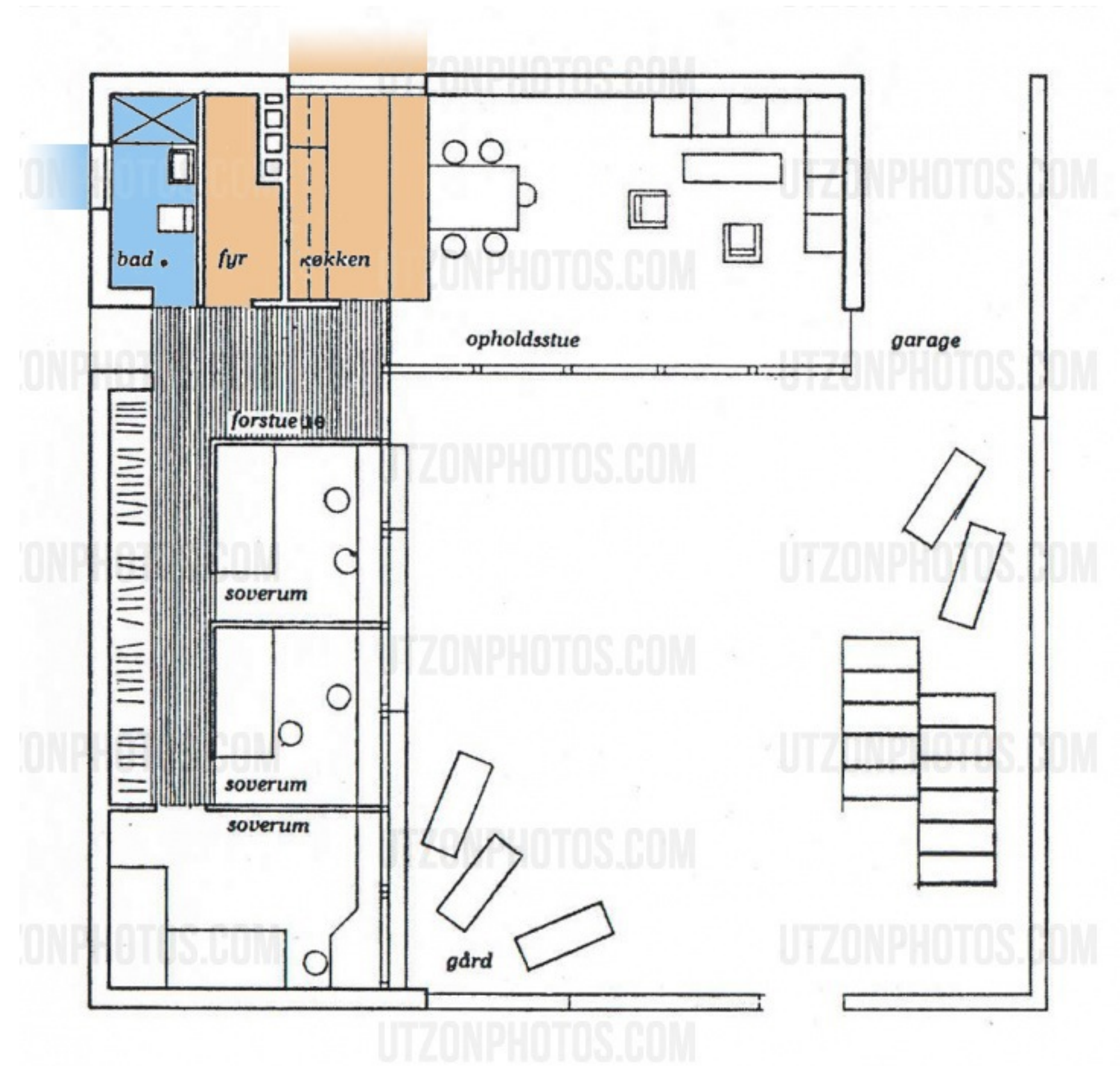
_SINGLE STOREY UNITS



NATURAL VENTILATION

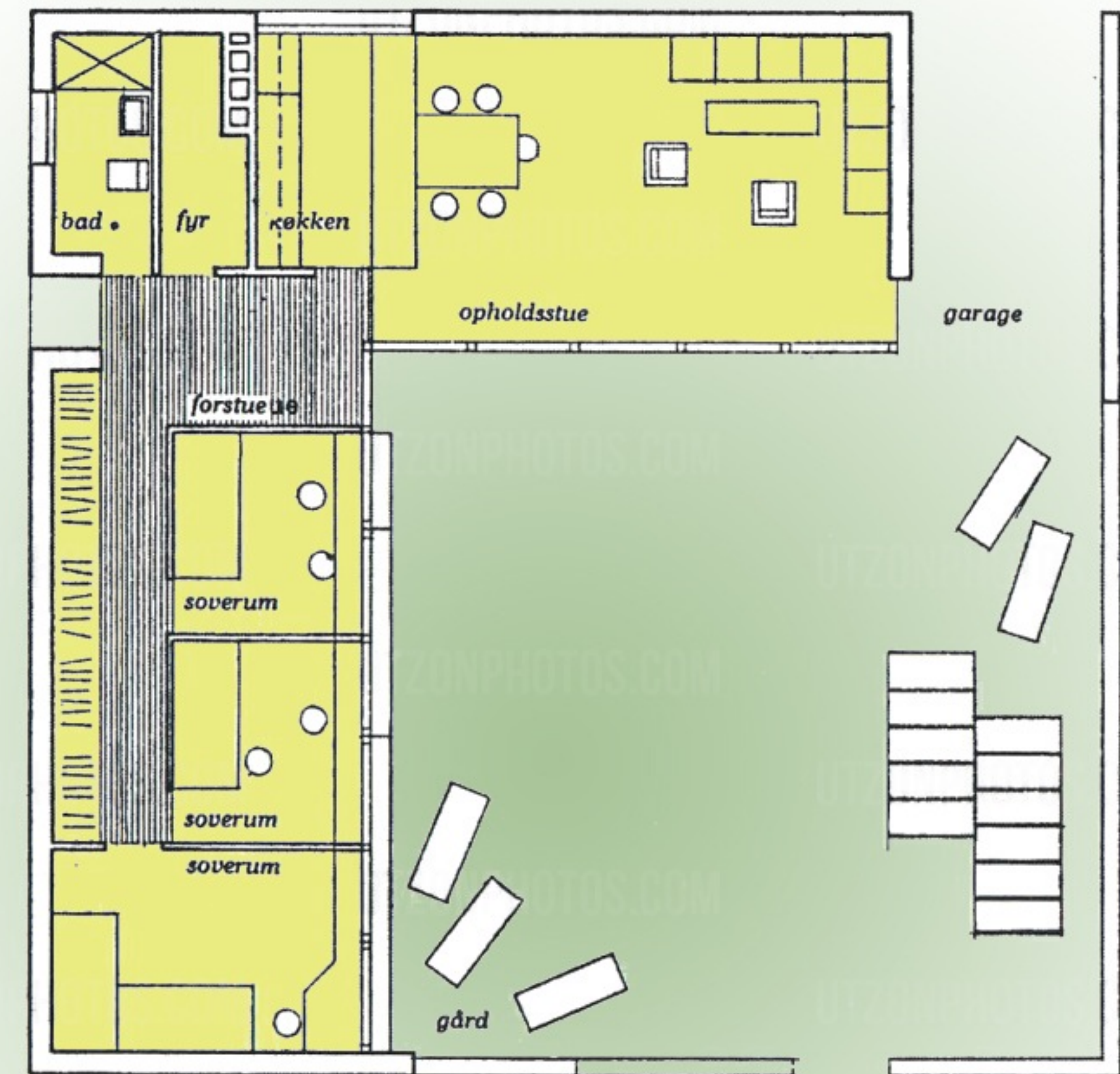
_SINGLE STOREY UNITS

_KITCHEN AND BATHROOM WINDOWS



PASSIVE DESIGN

_THIN EXTERIOR THRESHOLD



PASSIVE DESIGN

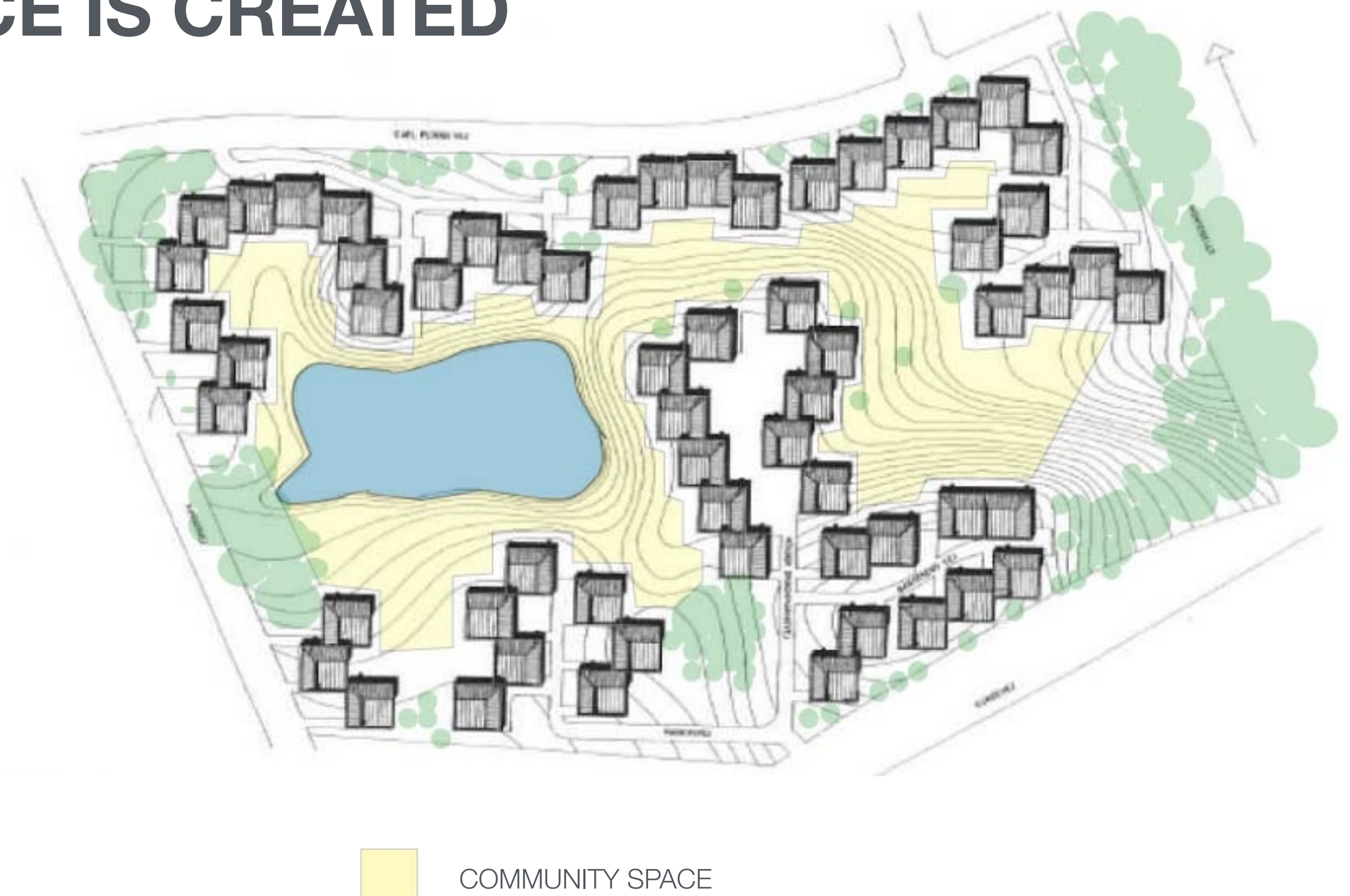
_THIN EXTERIOR THRESHOLD

_VEGETATION



HOW COMMUNITY SPACE IS CREATED

_ARRANGEMENT OF THE HOUSES
_PLACEMENT OF TREES



QUALITIES OF COMMUNITY SPACE

_ALTERNATIVELY A SHARED SPACE

_NOT EFFECTIVELY INVITING



IMPROVEMENT
_PARK INFRASTRUCTURE
_COMMUNITY CENTER



SUSTAINABLE NEIGHBOURHOOD

A STRONG VIEW OF SUSTAINABILITY "REPRESENTS A REVISED FORM OF SELF-RELIANT COMMUNITY DEVELOPMENT WHICH SUSTAINS PEOPLE'S LIVELIHOODS USING APPROPRIATE TECHNOLOGY". (HUCKLE, 1996)

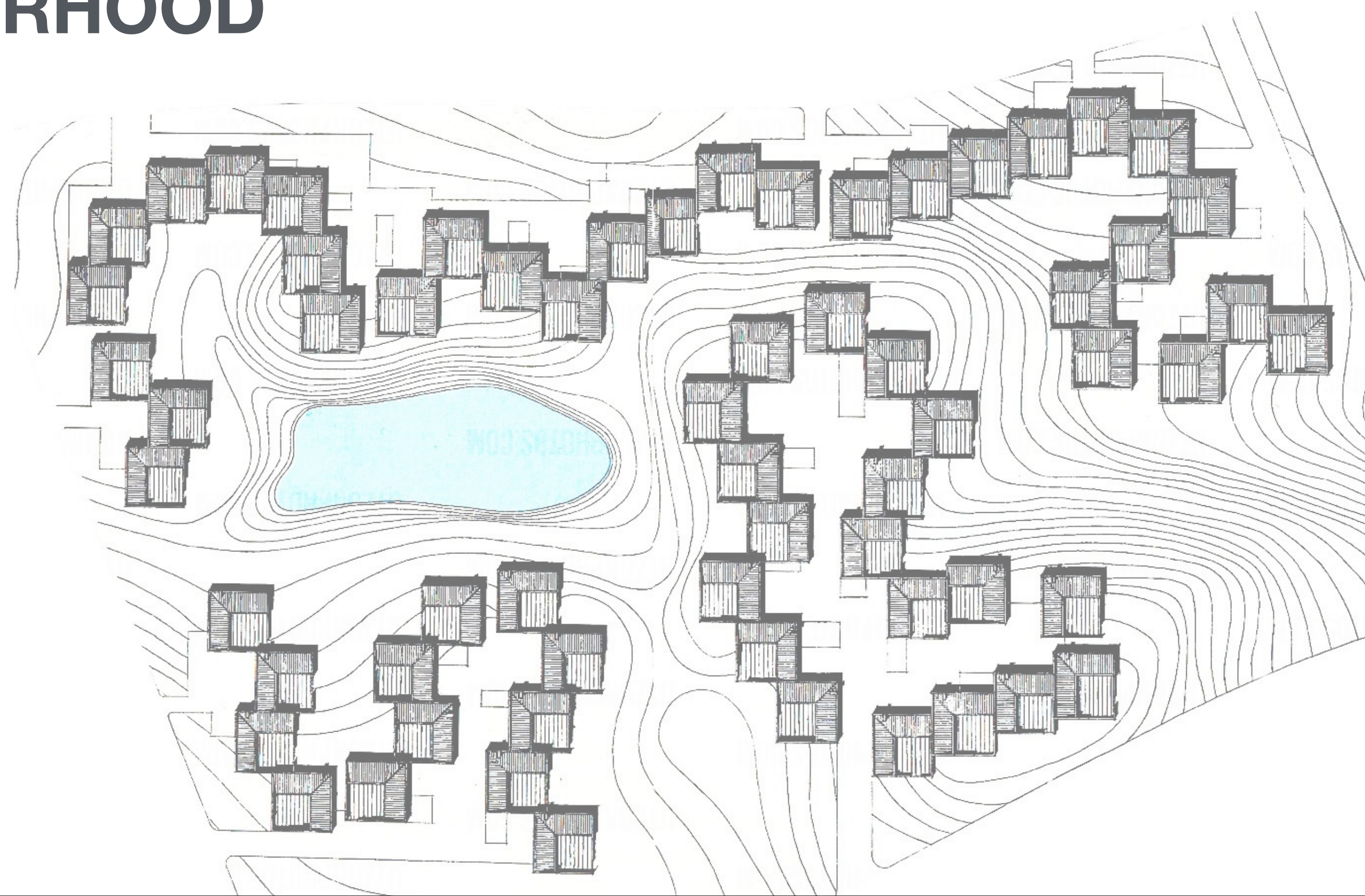
SUSTAINABLE NEIGHBOURHOOD

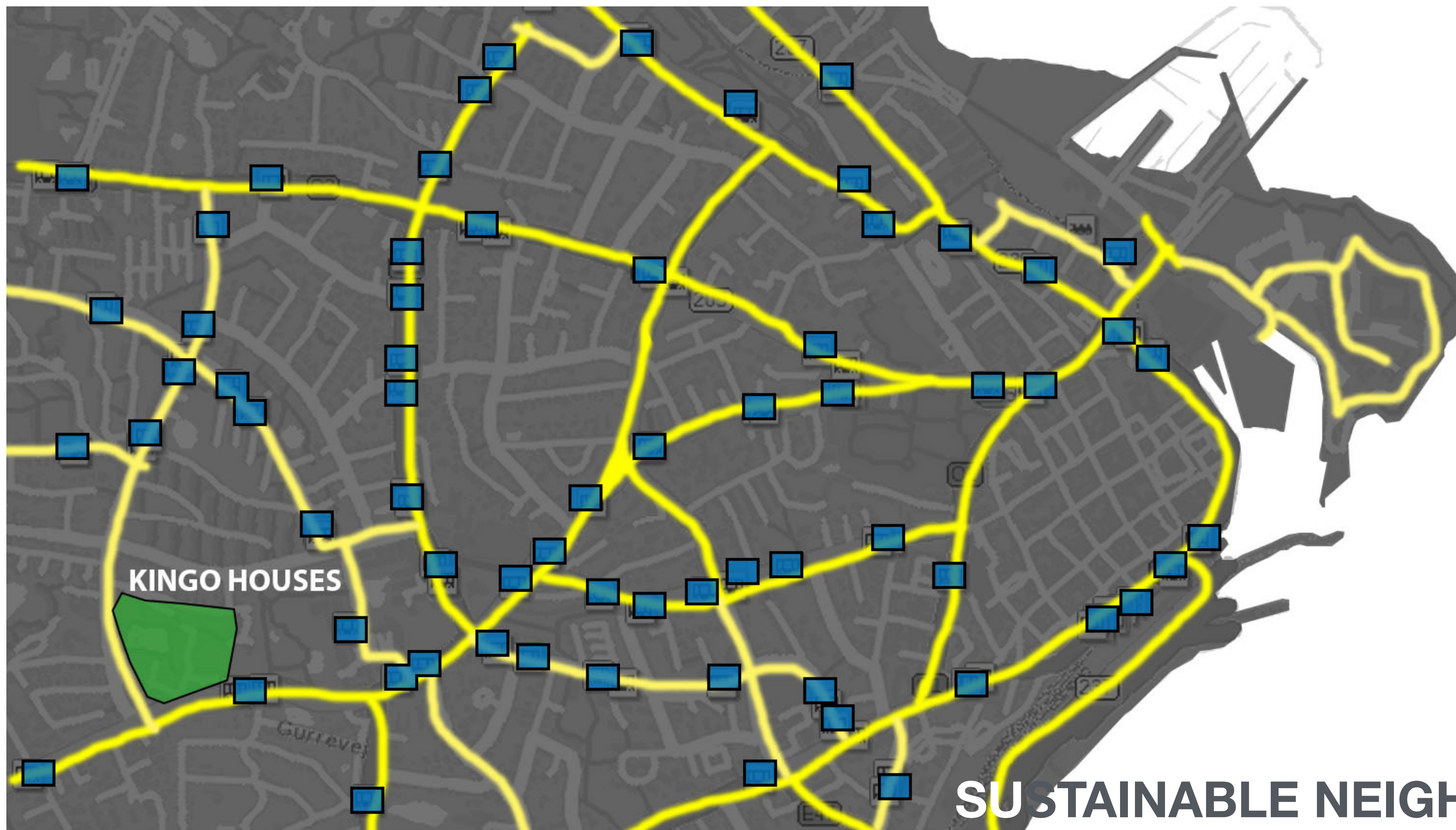
- _COMMUNITY ATMOSPHERE
- _CONVENIENT TRANSPORTATION
- _PRESERVES EXISTING ENVIRONMENT
- _CLOSE TO AMENITIES

EACH UNIT PROVIDES ITS OWN
VIEW OF THE SURROUNDING
LANDSCAPE, ALLOWING FOR A
RURAL, NATURAL FEEL WHILE
STILL EXISTING IN A LARGER
URBAN COMMUNITY

SUSTAINABLE NEIGHBOURHOOD

_COMMUNITY ATMOSPHERE

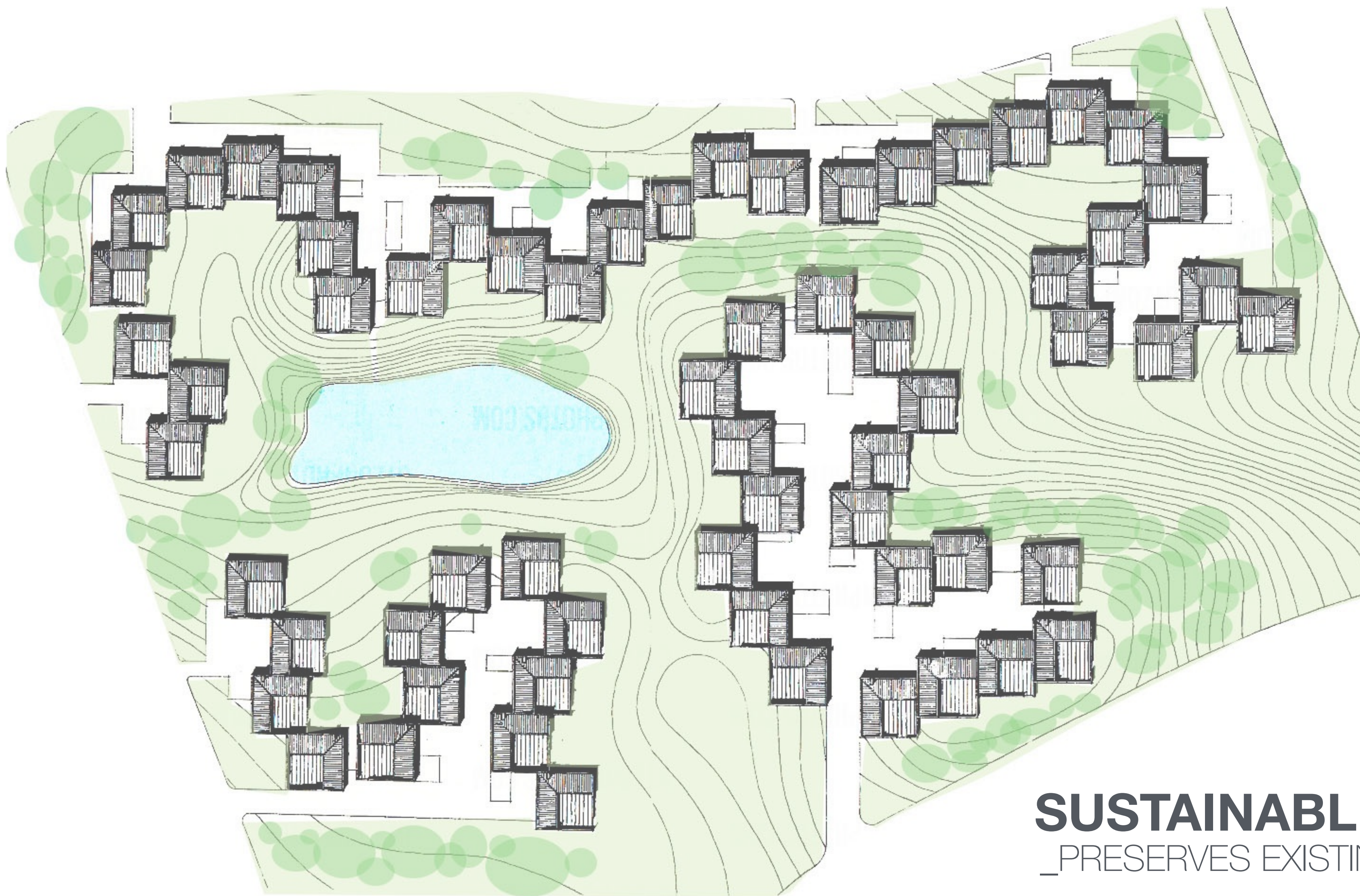




KINGO HOUSES

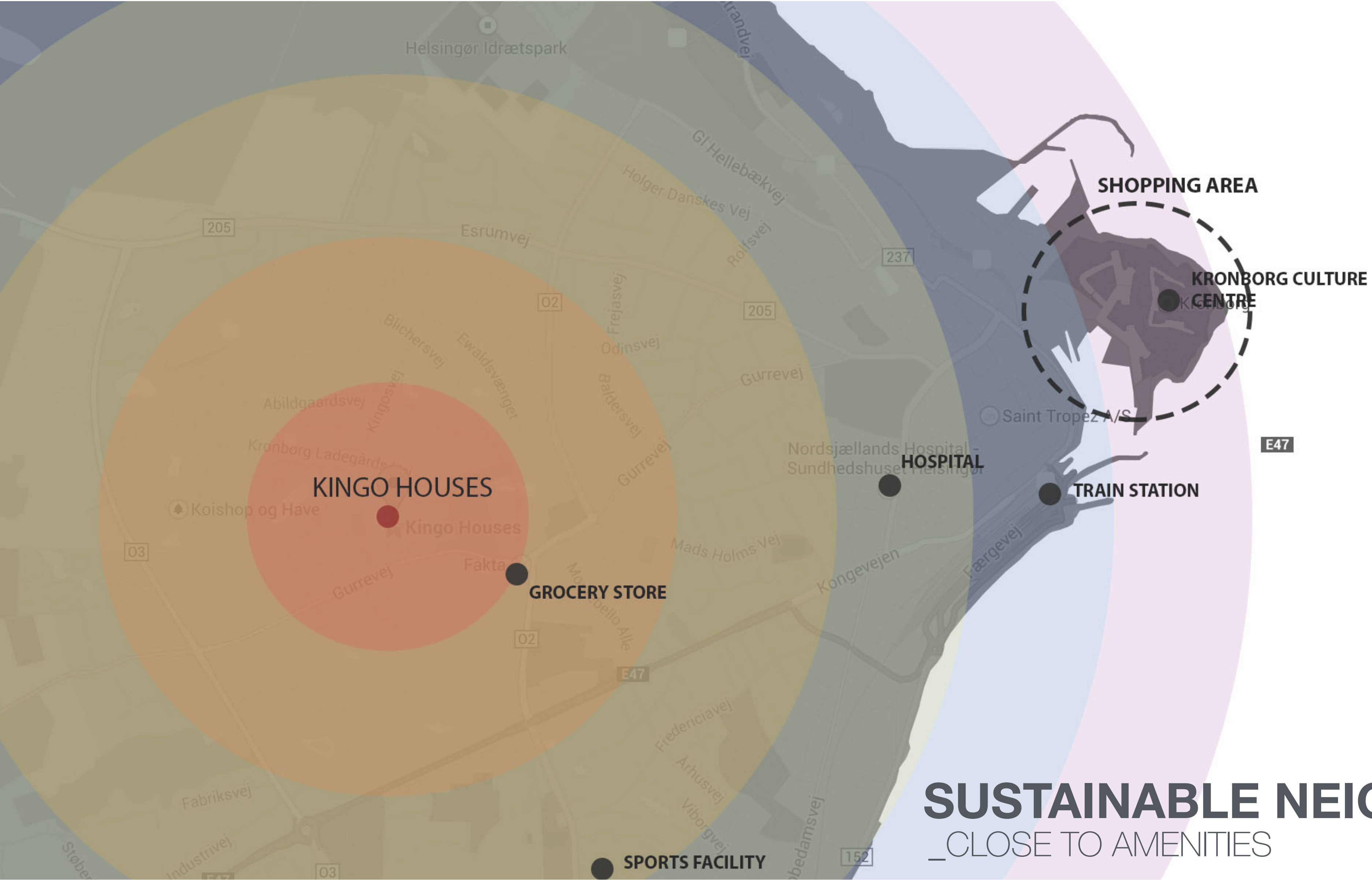
SUSTAINABLE NEIGHBOURHOOD
_CONVENIENT TRANSPORTATION

The plan was developed
keeping the natural
vegetation in mind and
maintaining it as well as the
new neighbourhood.



SUSTAINABLE NEIGHBOURHOOD

_PRESERVES EXISTING ENVIRONMENT



- 0.5 KM
- 1.0 KM
- 1.5 KM
- 2.0 KM
- 2.5 KM
- 3.0 KM

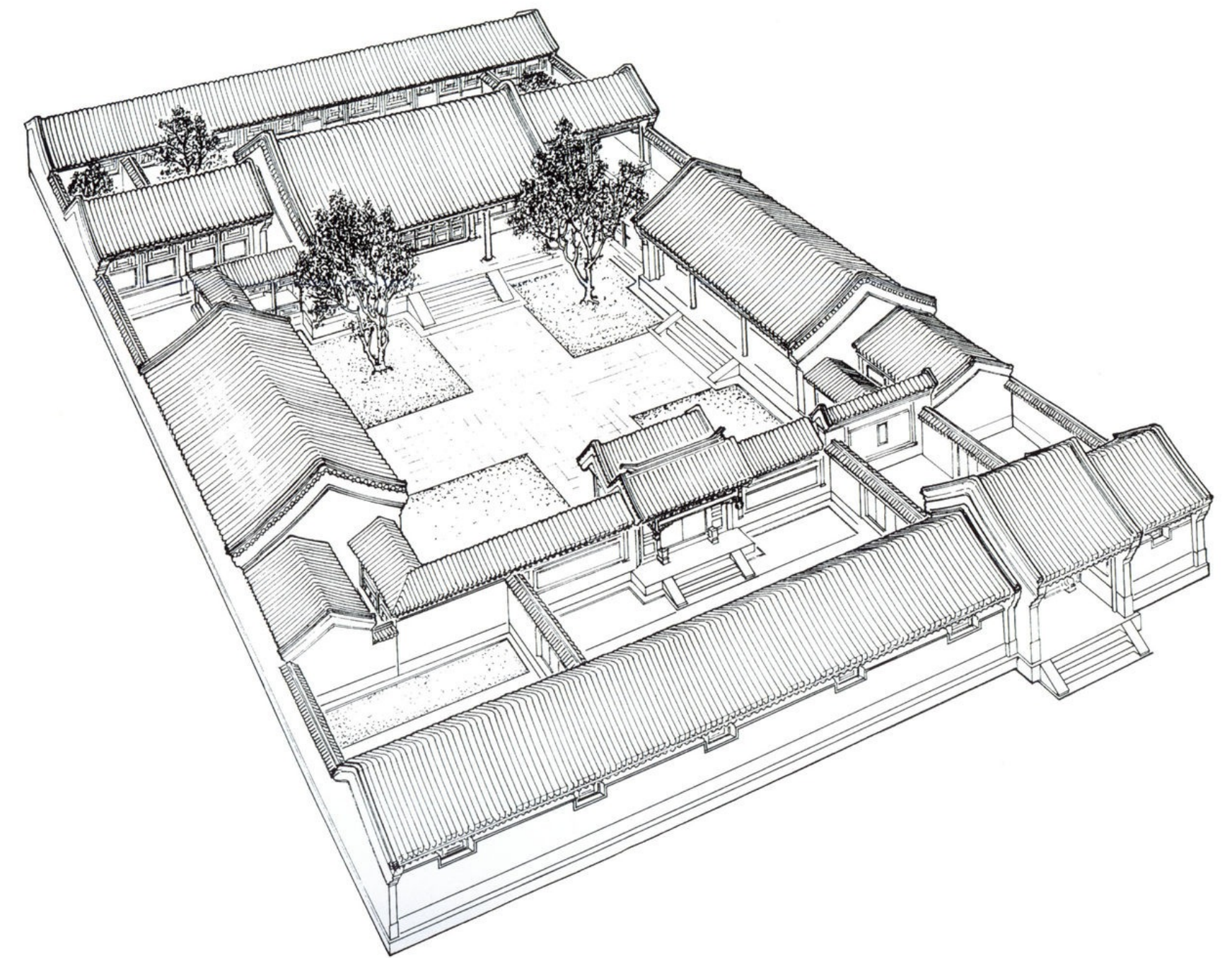
SUSTAINABLE NEIGHBOURHOOD
_CLOSE TO AMENITIES

PRIVACY

_"like flowers on the branch of cherry tree, each turning toward the sun." The individual houses are L-shaped with a living room and study in one section, and the kitchen, bedroom and bathroom in the other. Walls of varying heights closed the remaining open sides of the L.

PRIVACY

_"like flowers on the branch of cherry tree, each turning toward the sun." The individual houses are L-shaped with a living room and study in one section, and the kitchen, bedroom and bathroom in the other. Walls of varying heights closed the remaining open sides of the L.



PRIVACY

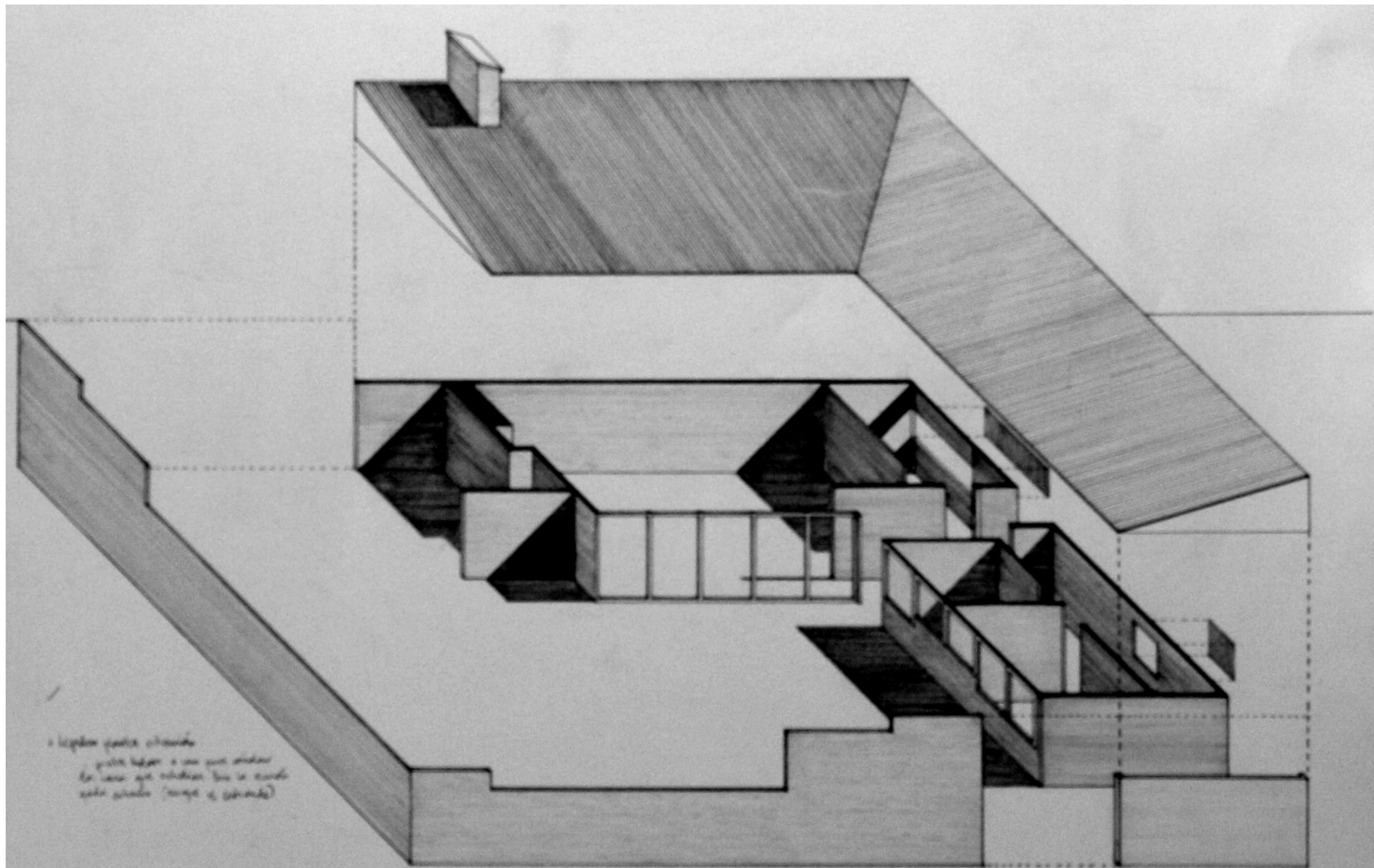
_"like flowers on the branch of cherry tree, each turning toward the sun." The individual houses are L-shaped with a living room and study in one section, and the kitchen, bedroom and bathroom in the other. Walls of varying heights closed the remaining open sides of the L.



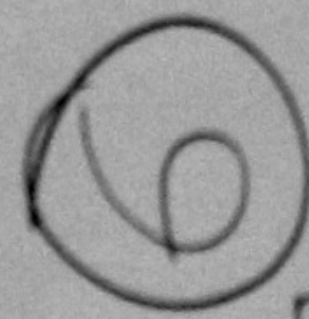
PRIVACY

_enclosure by two walls of varying heights
_limits the amount of private space, but this
is excused by the provision of large
landscaped communal spaces





a legible space structure
 with light & air circulation
 for users who interact with the space
 with a sense of rhythm & continuity



ØRN UTZON

ROSA GONZALEZ

BIBLIOGRAPHY

"Buy Access to Guide to Utzon." » [Utzonphotos.com](http://www.utzonphotos.com/guide-to-utzon/projects/kingohusene-helsingor/). Accessed February 4, 2015. <http://www.utzonphotos.com/guide-to-utzon/projects/kingohusene-helsingor/>.

"Kingo Housing ProjectHelsingor, Denmark - 1956-58." Kingo Housing Project by Jorn Utzon. Accessed February 4, 2015. <http://architecture.about.com/library/blutzon-kingohousing.htm>.

":: Romerhusene / Kingohusene I Helsingør ::." :: Romerhusene / Kingohusene I Helsingør ::. Accessed February 4, 2015. <http://www.romerhusene.dk/index2003eng.htm>.

Smith, Mark K. (2008) 'Sustainable communities and neighbourhoods. Theory, policy and practice', the encyclopaedia of informal education. [www.infed.org/communities/sustainable_communities.htm].